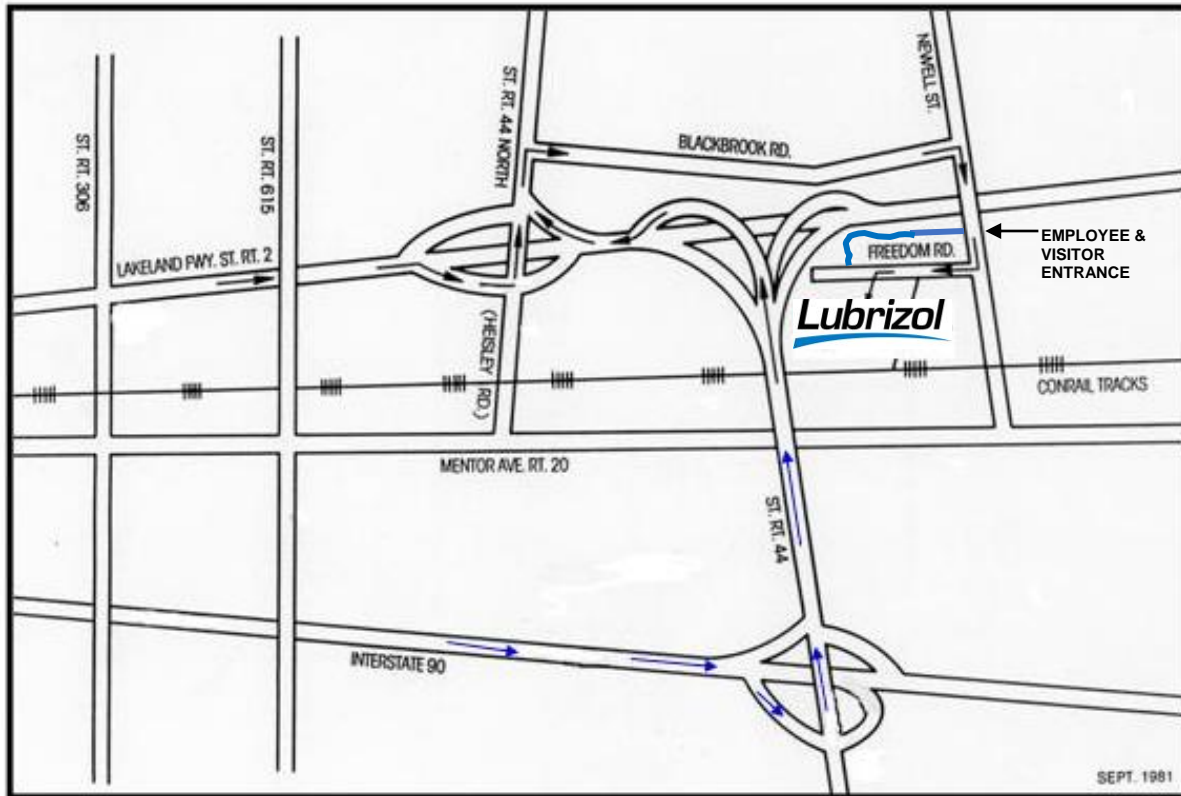


## Directions to Lubrizol Painesville Plant

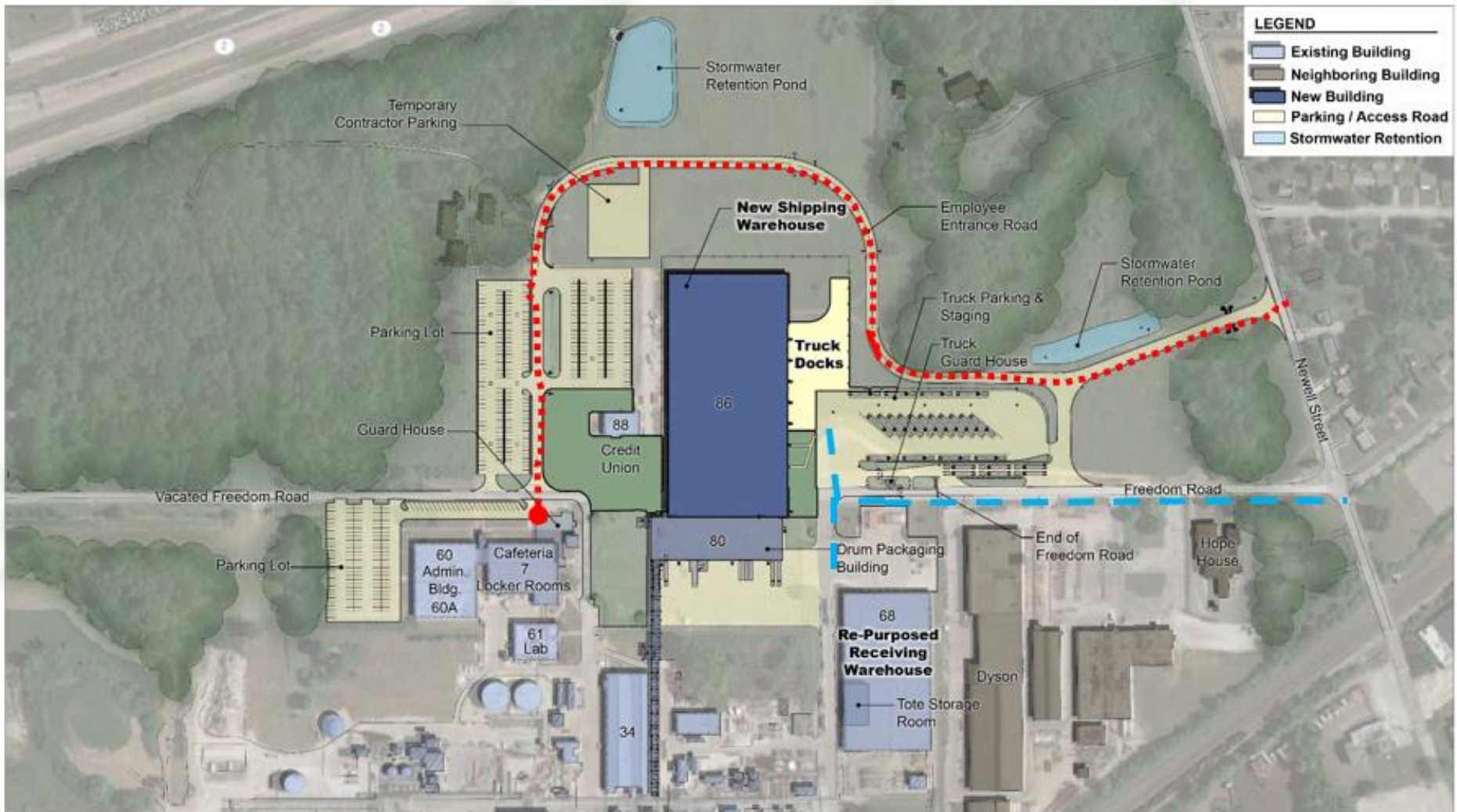


### Traveling East on Lakeland Freeway (State Route 2)

1. Exit State Route 44 North (Hensley Road)
2. Drive North to Blackbrook Road (Turn Right)
3. Drive to Newell Street (Turn Right)
4. Trucks - Take Newell Street to Freedom Road. Turn right. Trucks enter at security truck gate after entering queue lane on right.  
Visitors/Employees - Enter on access road approximately 300 yards north of Freedom Rd. Follow road as it curves to north of new warehouse. Road dead ends at security. Sign in at security. (See page 2 for details on new access road.)

### Traveling East on Interstate 90

1. Exit State Route 44 North
2. Take Route 44 to Route 2 West, Exit on Grand River exit. Turn Right.
3. Drive to Blackbrook Road. Turn Right.
4. Drive to Newell Street. Turn right.
5. Trucks - Take Newell Street to Freedom Road. Turn right. Trucks enter security truck gate after entering queue lane on right.  
Visitors/Employees - Enter on access road approximately 300 yards north of Freedom Rd. Follow road as it curves to north of new warehouse. Road dead ends at security. Sign in at security. (See page 2 for details on new access road.)



- ..... Visitors follow access road around new warehouse to security station
- - - Truck traffic use Freedom Road access and enter queue to enter through security truck entrance. Trucks will be instructed where to pick up or drop off their loads.